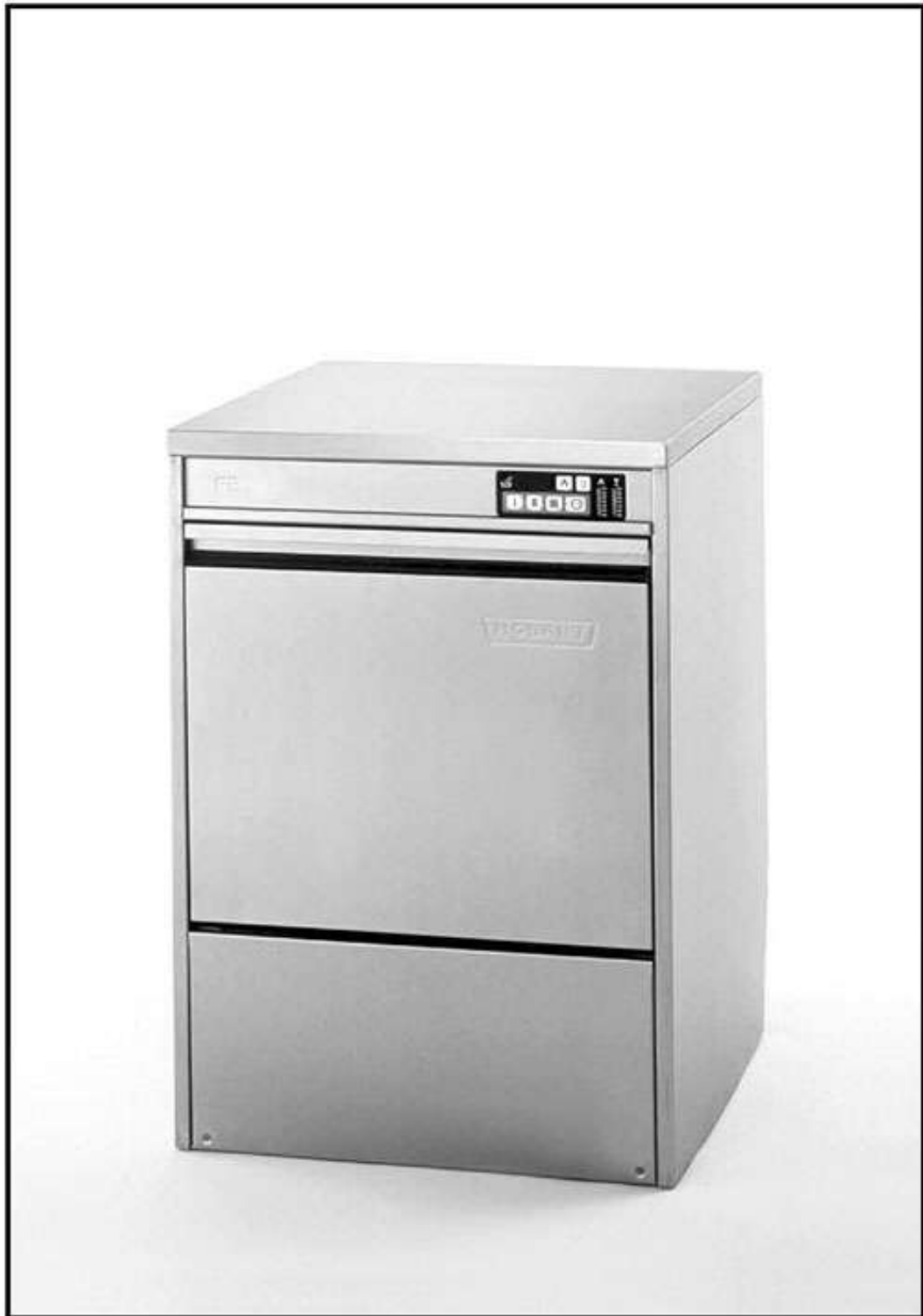
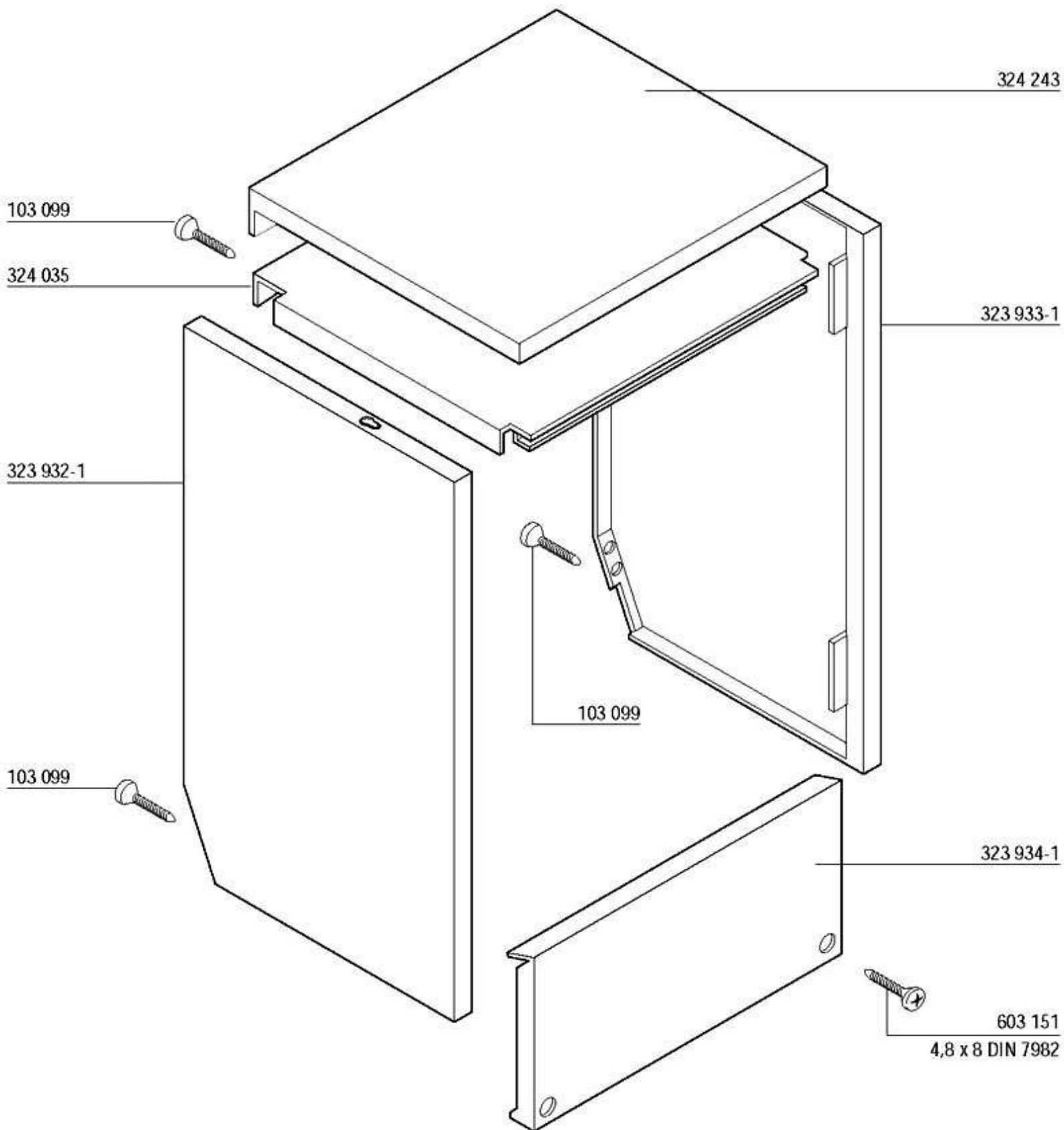
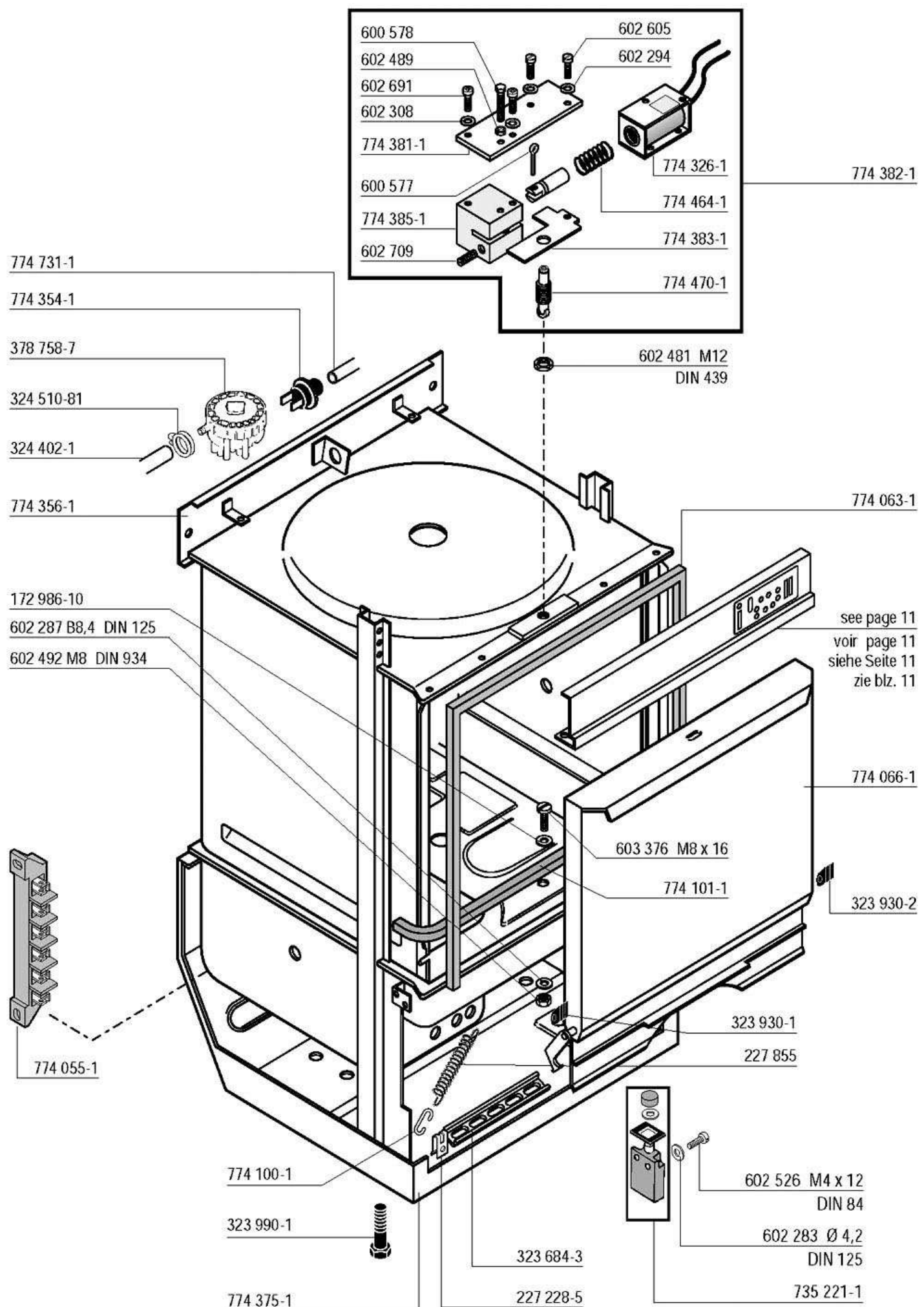


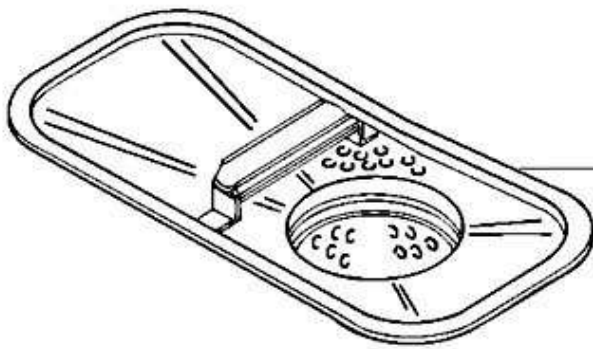
HOBART



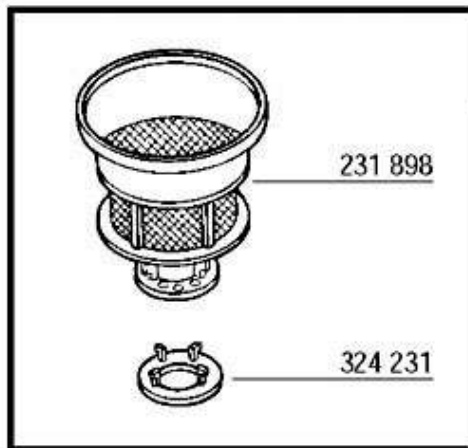
FE-W







231 958



324 179

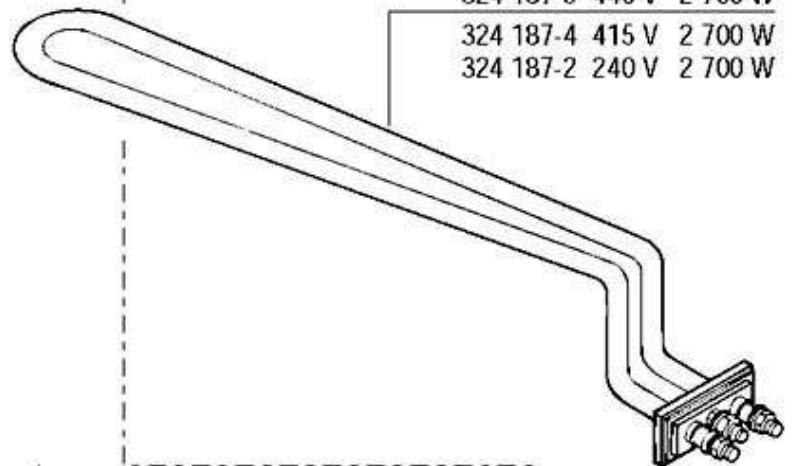
231 898

324 231

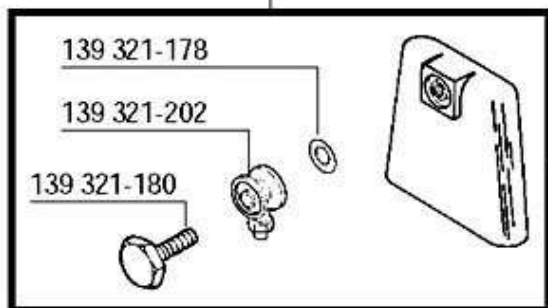
324 187-5 440 V 2 700 W

324 187-4 415 V 2 700 W

324 187-2 240 V 2 700 W



139 321-47



139 321-178

139 321-202

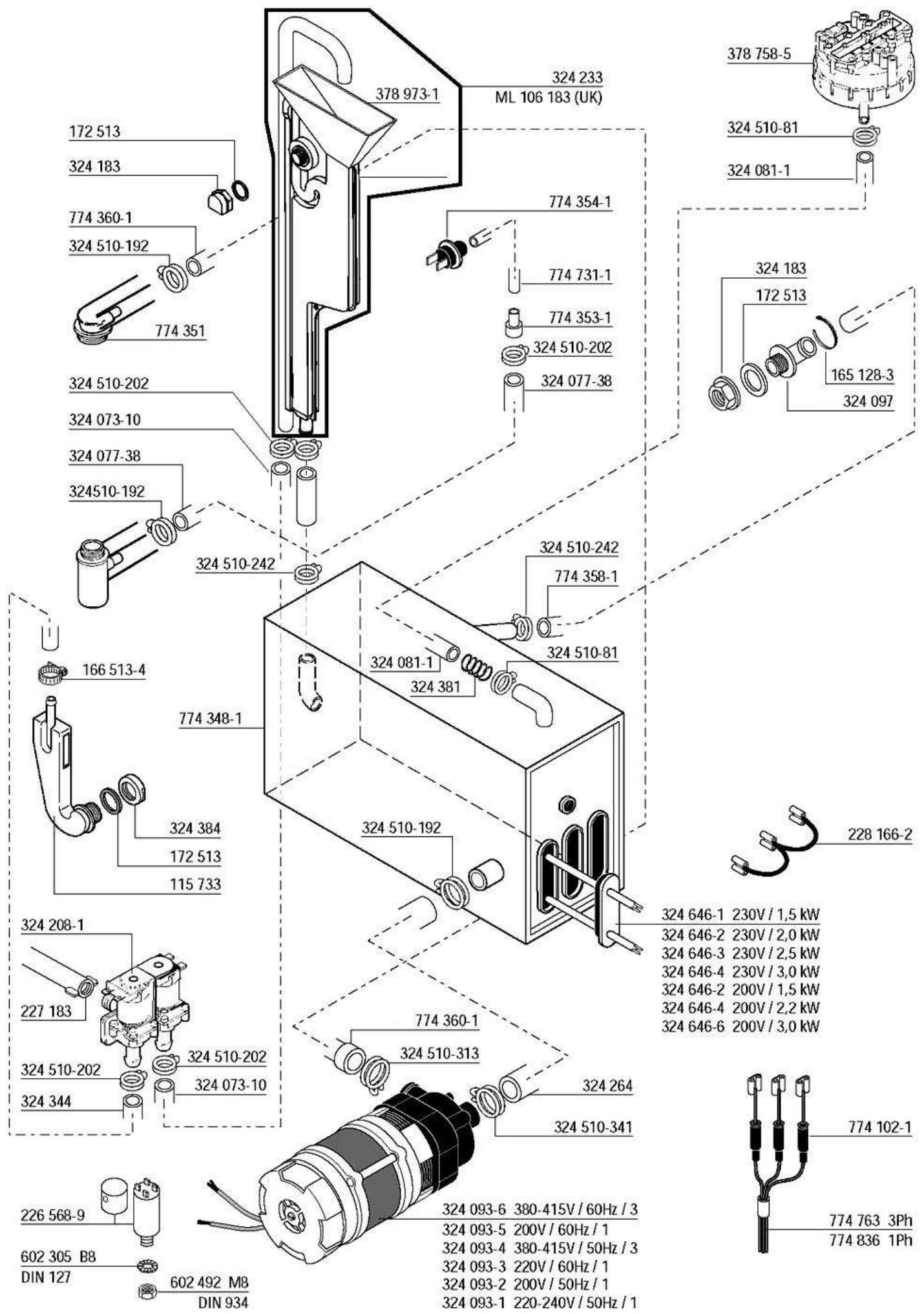
139 321-180

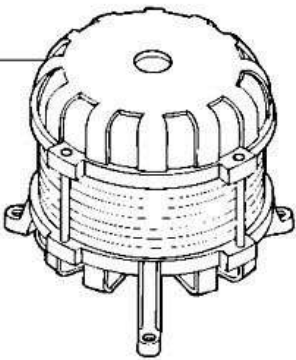
172 739-9

168 611-3

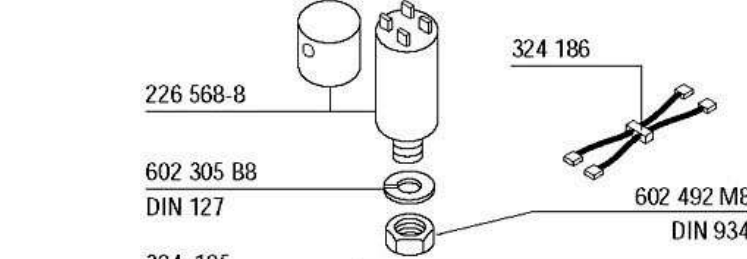
300084-1



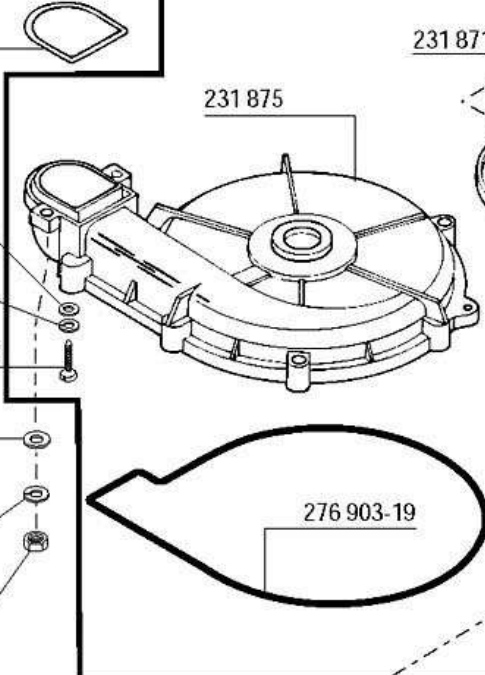




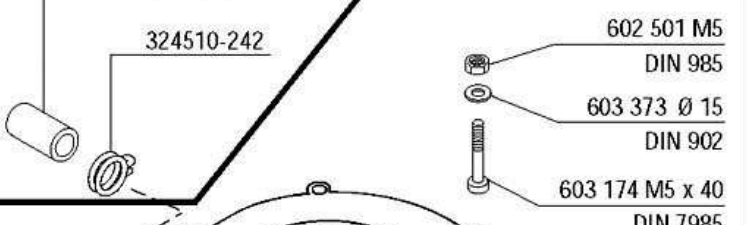
231 874-10	480 V	60 Hz	3
231 874-9	440 V	50 Hz	3
231 874-8	380 V	60 Hz	3
231 874-7	440 V	60 Hz	3
231 874-6	220 V	60 Hz	3
231 874-5	220 V	60 Hz	1
231 874-4	200 V	60 Hz	1
231 874-3	220-240 V	50 Hz	3
231 874-2	200 V	50 Hz	1
231 874-1	220-240 V	50 Hz	1
231 874-3	380-415 V	50 Hz	3



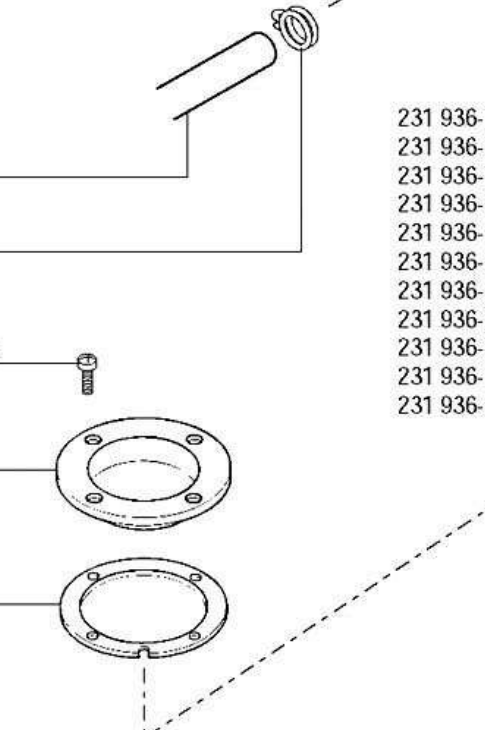
226 568-8
 602 305 B8
 DIN 127
 324 185
 324510-242
 324 186
 602 492 M8
 DIN 934



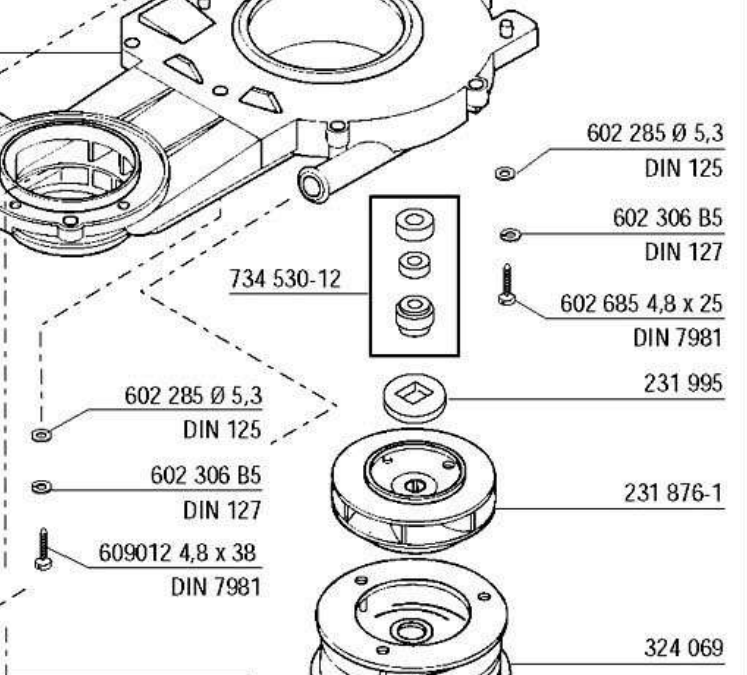
276 903-17
 231 875
 602 285 Ø 5,3
 DIN 125
 602 306 B 5
 DIN 127
 601 163 4,8 x 32
 DIN 7981
 602 285 Ø 5,3
 DIN 125
 602 306 B5
 DIN 127
 602 490 M5
 DIN 934
 276 903-19



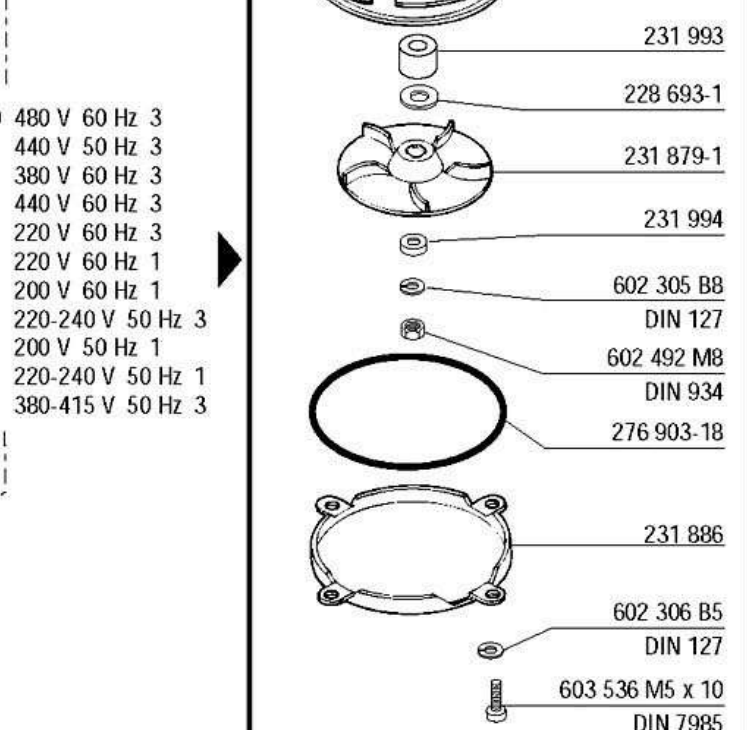
602 501 M5
 DIN 985
 603 373 Ø 15
 DIN 902
 603 174 M5 x 40
 DIN 7985



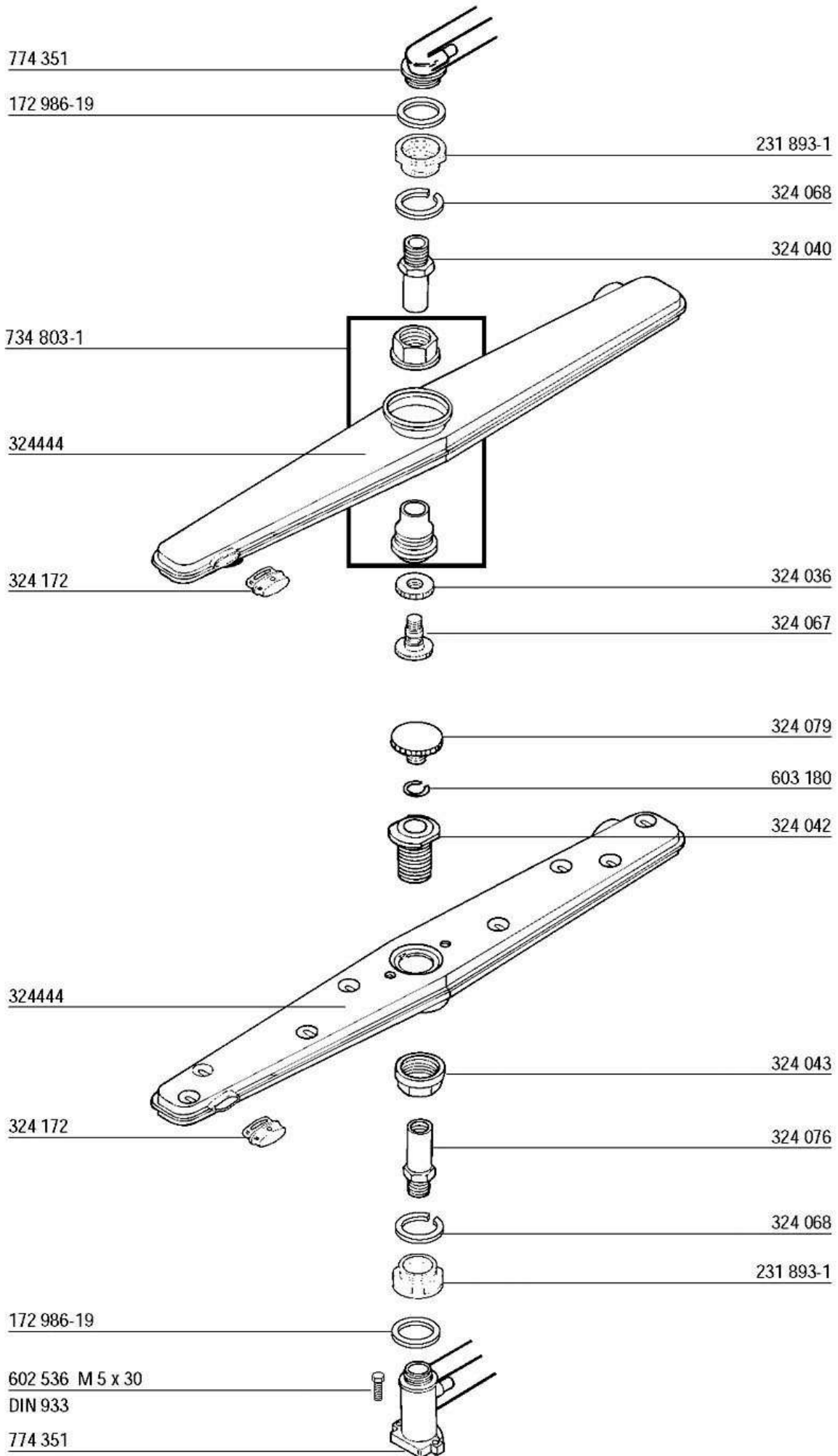
324 269-1
 324510-242
 603 182 M5 x 14
 DIN 965
 324 053
 324 056



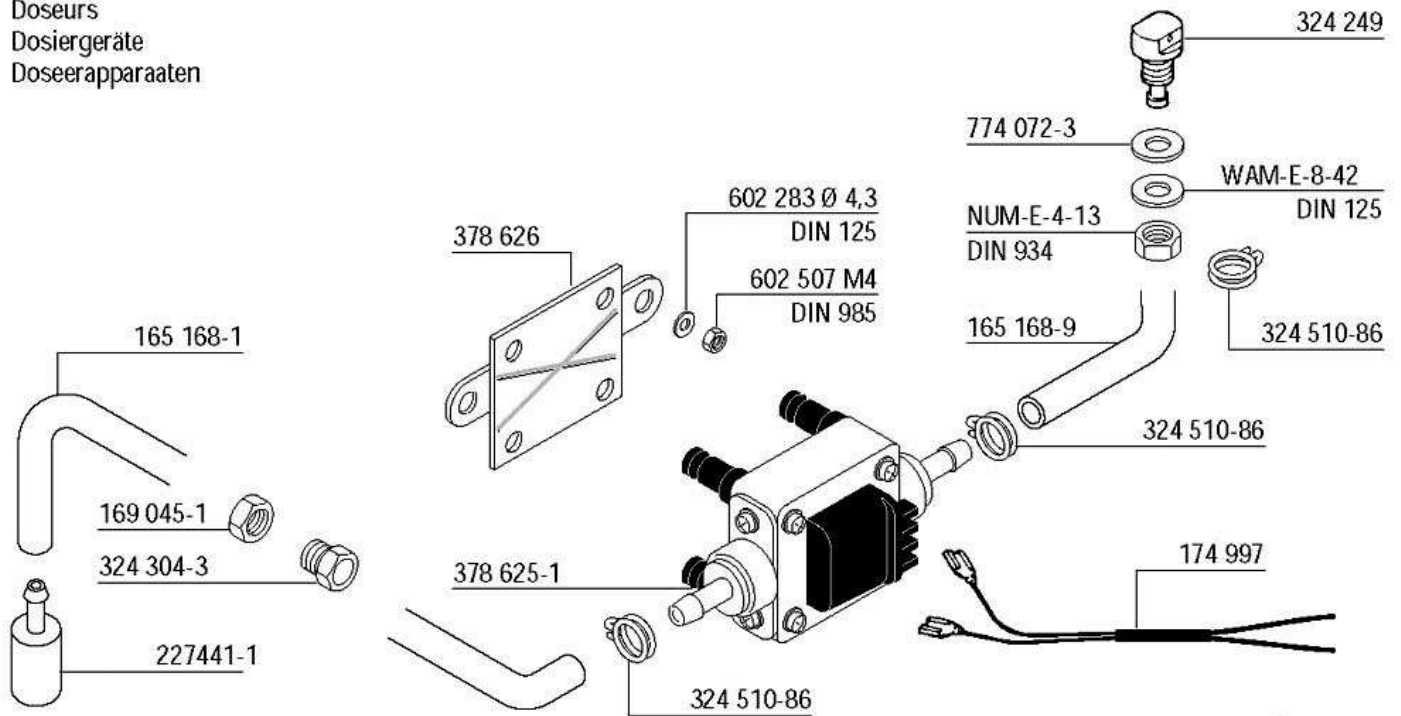
231 871
 602 285 Ø 5,3
 DIN 125
 602 306 B5
 DIN 127
 609012 4,8 x 38
 DIN 7981
 734 530-12
 602 285 Ø 5,3
 DIN 125
 602 306 B5
 DIN 127
 602 685 4,8 x 25
 DIN 7981
 231 995
 231 876-1
 324 069
 231 993
 228 693-1
 231 879-1
 231 994



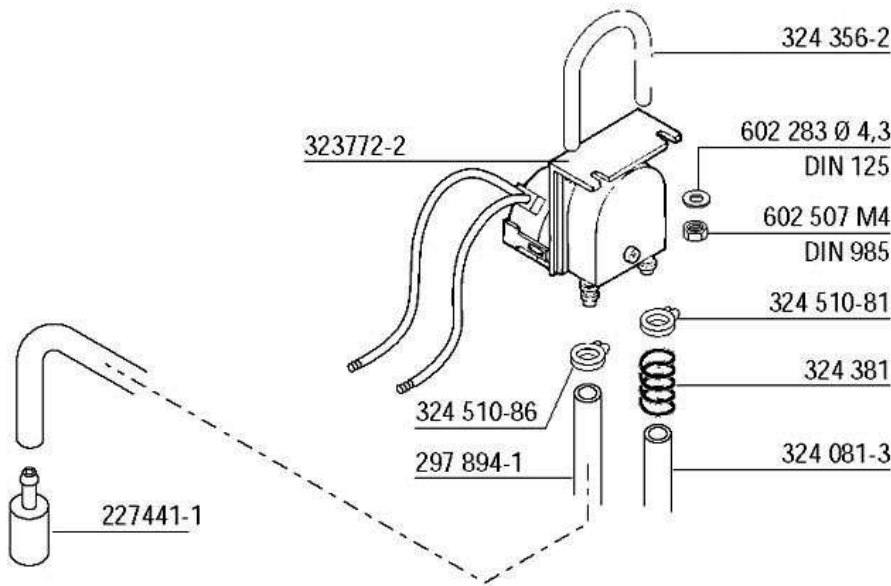
231 936-10 480 V 60 Hz 3
 231 936-9 440 V 50 Hz 3
 231 936-8 380 V 60 Hz 3
 231 936-7 440 V 60 Hz 3
 231 936-6 220 V 60 Hz 3
 231 936-5 220 V 60 Hz 1
 231 936-4 200 V 60 Hz 1
 231 936-3 220-240 V 50 Hz 3
 231 936-2 200 V 50 Hz 1
 231 936-1 220-240 V 50 Hz 1
 231 936-3 380-415 V 50 Hz 3
 602 305 B8
 DIN 127
 602 492 M8
 DIN 934
 276 903-18
 231 886
 602 306 B5
 DIN 127
 603 536 M5 x 10
 DIN 7985



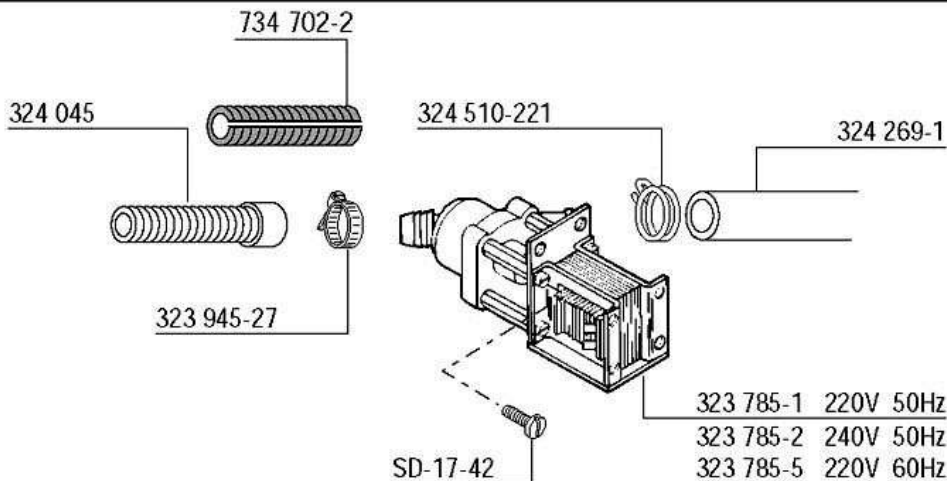
Dispensers
 Doseurs
 Dosiergeräte
 Doseerapparaten



detergent
 détergent
 Reiniger
 wasmiddel



rinse agent
 produit de rinçage
 Klarspüler
 naspoelmiddel



Drain
 Vidange
 Ablauf
 Afvoer

